

Sharp ER-8700 IRC programming Manual

# SHARP®

ER-8700 INTER-REGISTER COMMUNICATION SYSTEM

ER-8700 MASTER/SLAVE KOMMUNIKATIONSSYSTEM (IRC)

SYSTEME DE COMMUNICATION DIRECTE ENTRE ENREGISTREUSES DE LA ER-8700

STEMA DE COMUNICACION ENTRE CAJAS REGISTRADORAS ER-8700

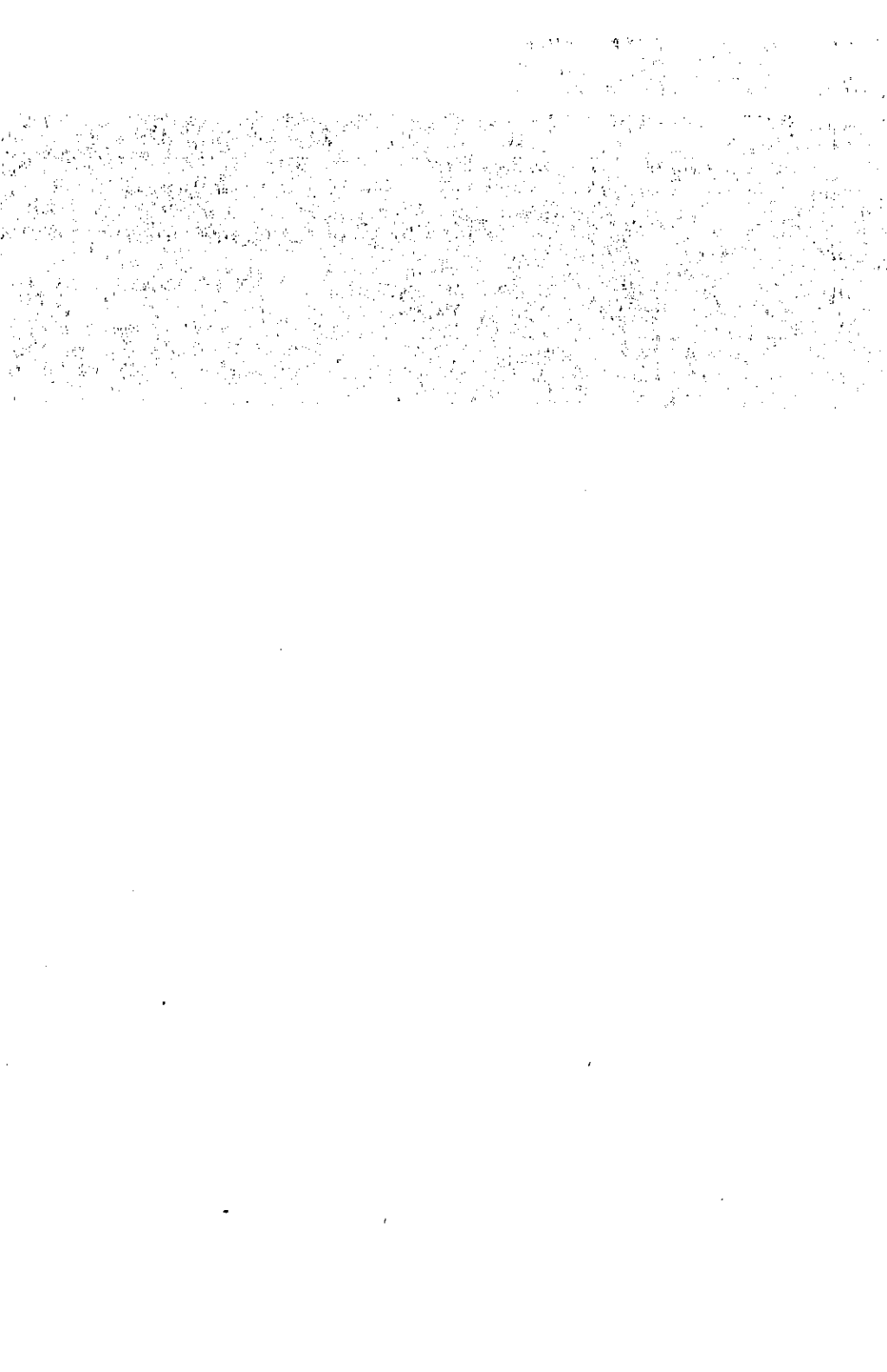
MODEL  
MODELL  
MODELE  
MODELO

**ER-87MA**

**ER-87SL**

INSTRUCTION MANUAL  
BEDIENUNGSANLEITUNG

MANUEL D'INSTRUCTIONS  
MANUAL DE INSTRUCCIONES



# CONTENTS

	Page
<b>1. INTRODUCTION</b> .....	3
<b>2. PROGRAMMING</b> .....	4
2-1. Programming the IRC system .....	5
2-1-1. Setting the terminal number — master and slaves .....	5
2-1-2. Creating/updating the master.list — master .....	6
2-1-3. Assigning a group number to each terminal — master .....	8
2-1-4. Selecting the file allocation system (centralised or individual) for the PLU, SKU, free text, debit and clerk files — master .....	9
2-1-5. Creating the cashier (register/cashier assignment) list — master .....	11
2-1-6. Choosing whether to enable or disable the automatic sign-off operation upon the finalization of transaction — master and slaves .....	12
2-1-7. Choosing whether or not to automatically down-load the contents of the maintenance file (for manual operation) into the preset data files upon open-store operation — master ...	13
2-1-8. Choosing whether to enable or disable the manager retry function when a transmission error occurs — master and slaves .....	14
2-1-9. Choosing whether to inhibit (lock up) or allow (continue) further entry operations when the transaction log buffer is full — master and slaves .....	15
2-1-10. Choosing whether to output the report on department daily sales totals for each slave to the master or the slave — master .....	16
2-1-11. Specifying the terminal to serve as the back-up master — master .....	17
2-2. Programming for the kitchen printer .....	18
2-2-1. Assigning terminal numbers to the kitchen printers — master and slaves .....	18
2-2-2. Naming the kitchen printer — master and slaves .....	19
2-2-3. Choosing whether to allow or disallow data transmission to the kitchen printers — master .....	20
2-2-4. Choosing items to be output on the kitchen printers — master and slaves .....	21
2-2-5. Selecting which receipt type is used for each of the kitchen printers — master and slaves .....	22
2-3. Reading the program contents .....	23
2-3-1. Reading the program contents related to inline communications — master and slaves .....	23
2-3-2. Reading the program contents related to the kitchen printers — master and slaves .....	23
<b>3. INLINE COMMUNICATIONS</b> .....	24
3-1. Displays .....	24
3-1-1. Machine status indicator lamps .....	24

	Page
3-1-2. Message displays .....	25
3-2. Open store and close store operations .....	27
3-2-1. Open store operation .....	27
3-2-2. Close store operation .....	29
3-3. Sign-on and sign-off operations .....	31
3-3-1. Sign-on operation (clerk assignment) .....	31
3-3-2. Sign-off operation (clerk assignment cancellation) .....	32
3-3-3. Manual sign-on function .....	33
3-3-4. Functions of the master and slaves in the sign-off state .....	34
3-4. Look-up of the preset data in the PLU, SKU, free text and debit files .....	34
3-5. Look-up and updating of the GLU file .....	35
3-6. Transaction data collection .....	36
3-7. Down-loading preset data .....	37
3-7-1. General .....	37
3-7-2. Programming, checking and down-loading the contents of the maintenance file .....	38
3-7-3. Down-loading the preset data file of the master into all slaves ..	42
3-8. Clearing the transaction sales memory manually — slave .....	44
3-9. Communications with a kitchen printer .....	45
<b>4. MANAGEMENT OF CLERKS/CASHIERS .....</b>	<b>46</b>
4-1. Management of clerks .....	46
4-2. Management of cashiers .....	46
<b>5. INDIVIDUAL AND CONSOLIDATED REPORTS .....</b>	<b>47</b>
5-1. Issuance of reports .....	47
5-2. List of reports — master .....	48
5-3. List of reports — slaves .....	54
<b>6. SYSTEM BACK-UP .....</b>	<b>57</b>
6-1. System back-up by the individual file allocation system for PLU, SKU, free text and debit files .....	57
6-2. Transaction log buffer .....	57
6-3. Guest check and clerk data back-up .....	58
<b>7. MANAGER RETRY FUNCTION .....</b>	<b>61</b>
7-1. When the master has been programmed to enable the manager retry function .....	61
7-2. When the master has been programmed to disable the manager retry function .....	62
<b>8. TRANSMISSION ERROR MESSAGES .....</b>	<b>63</b>
<b>9. BASIC SPECIFICATIONS .....</b>	<b>64</b>
<b>10. HANDLING THE KITCHEN PRINTER .....</b>	<b>65</b>
10-1. Lamps and switches .....	66
10-2. Replacement of the paper roll .....	67
10-3. Replacement of the ink ribbon .....	69

This is a “Table of Contents preview” for quality assurance

The full manual can be purchased from our store:

[https://the-checkout-tech.com/manuals/sharp/ER-8700 IRC programming manual.html](https://the-checkout-tech.com/manuals/sharp/ER-8700%20IRC%20programming%20manual.html)

And our free Online Keysheet maker:

<https://the-checkout-tech.com/Cash-Register-Keysheet-Creator/>

[HTTPS://THE-CHECKOUT-TECH.COM](https://THE-CHECKOUT-TECH.COM)